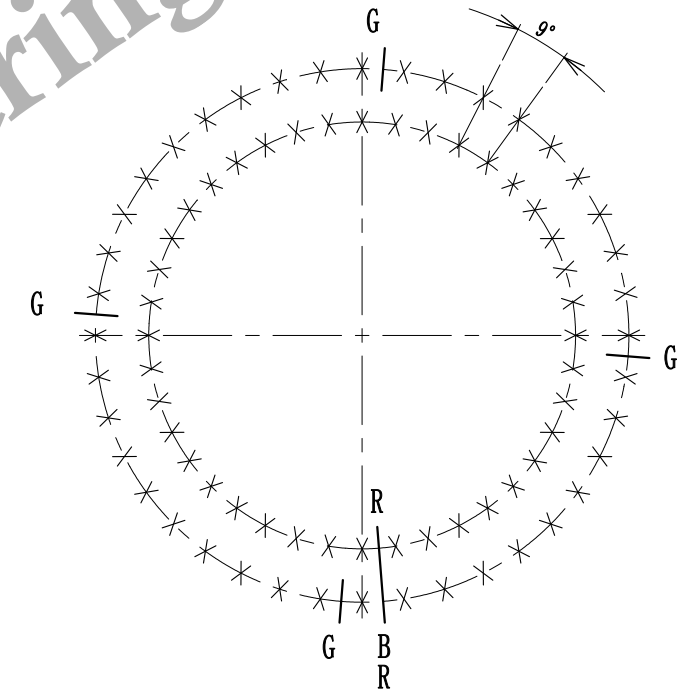


Implantation suivant A
 Implantation according to A
 Ansicht nach A

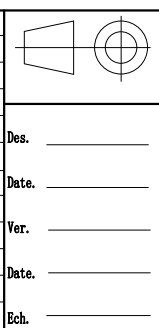


Sales Email: sales@jcb-bearing.com

| | |
|---|---|
| Denture - Gear - Verzahnung | |
| Droite | |
| Module - Modul 10 | Angle de pression Pressure angle 20° |
| Diametral pitch 89 | Pressure angle Eingriffswinkel 1 |
| Nr. of teeth - Zahnezahl 890 | Troncature Truncature - Kopfkürzung 890 |
| Diamètre primitif Pitch diameter - Teilkreissdurchmesser 10 | |
| Correction 2 m d Cote sur 11 dents Measurement on teeth Zahnessweite bei Zähnen 326.648 | |
| Faux rond au diamètre primitif - Run out on P.D. Rundlauffehler am Teilkreis | |
| Non trempée No hardened Ungehärtet 0.48 | Trempée Hardened Gehärtet 0.63 |

| | | | | |
|--|--|----|--|-------------------------------|
| Tolérances générales suivant IT-ETR-061 General tolerances according to IT-ETR-061 Allgemeine Toleranzen nach IT-ETR-061 | | | | |
| X | R.E. Q.R. A.R. | 40 | Trous de fixation Mounting holes Befestigungsböhrungen Ø 22 | equiv. equiv. gl. Abst. |
| | B.I. I.R. | 40 | Trous de fixation Mounting holes Befestigungsböhrungen Ø 22 | equiv. equiv. gl. Abst. |
| | R.E. Q.R. A.R. | 4 | Trous de graisseurs Grease holes Schmierböhrungen M 10 x 1.00 | equiv. equiv. gl. Abst. |
| | B.I. I.R. | | Trous de graisseurs Grease holes Schmierböhrungen | equiv. equiv. gl. Abst. |
| G | B Position approximative du bouchon et du raccord de trempé Filler plug and hardening connection of raceway | | | |
| | R ca Stopfen - und heerteschlupf - position | | | |

| | | | | | |
|--|--|--|--|--|--|
| | | | | | |
| | | | | | |
| | | | | | |
| | | | | | |
| | | | | | |
| | | | | | |
| | | | | | |
| | | | | | |
| | | | | | |
| | | | | | |



| | |
|---|----------------|
| Masse estimée Gewicht ca Estimated weight | 261 kgs lbs |
| Des. | |
| Date. | |
| Ver. | |
| Date. | |
| Ech. | |

| | |
|--|------------|
| N° | 02-1050-00 |
| Indice | A |
| Luoyang JCB Bearing Technology Co., Ltd | |
| Add: No. 285, Fenghua road, Luoyang, Henan, China. | |
| Postal: 471000 | |
| Phone: +86-379-68611678 | |
| Fax: +86-379-68611679 | |
| E-mail: sales@jcb-bearing.com | |